

LONDON



Location Filming in London
Code of Practice

Contents

Introduction	3
Definitions	4
General Location Filming Procedures	5
Location Filming – Application Process Flowchart	6
A-Z of Key Issues:	
Animals	7
Aerial Filming	7
Asbestos	8
Building Exteriors	9
Bullying & Harassment	9
Cabling	10
Camera Track	10
Catering	10
Charges	11
Child Performers	11
Council Property	11
Cranes, Jibs and Cherry Pickers	12
Employment	13
Equality	13
Filming from Vehicles	14
Firearms and Weapons	14
Health and Safety	15
Highways and Traffic Management	15
Historic and Cultural Locations	16
Indemnity and Insurance	16
Lighting	17
Litter Removal	17
Night Filming	18
Noise	18
Parking	19
Police and Emergency Services	19
Problem Solving	20
Publicity	20
Public Liability Insurance	20
Public Transport	20
Residents and Businesses	21
Risk Assessment	21
Rivers and Waterways	22
Road Markings	22
Scaffolding and Lighting Towers	22
Security	23
Signage	23
Special Effects and Pyrotechnics	24
Street Signs, Lighting and Furniture	25
Stunts	25
Sustainability	26

Introduction

This Code of Practice applies to all forms of production (including feature films, television, commercials, drama documentaries, music videos, idents, stills shoots, student and short film crews) shot on location in public places in London which are likely to, or have the potential to, cause disruption to normal activity.

In practice, small on-street location shoots (three people or less) may not need to adhere to all aspects of the Code at all times and it is not intended for news crews.

The aims of the Code are to ensure that:

- The industry can film effectively, efficiently and flexibly in London
- All involved in location filming act responsibly, professionally and considerately at all times
- The practical impact of filming on people and businesses within London is minimised

Through a combination of all the above, the long-term sustainability of filming in London is secured. This Code complements the production guidelines of the UK broadcasters which will in any event prevail.

This Code details the principles of best practice to which the signatories agree to adhere. It has been developed by film industry professionals in consultation with Borough Film Services and representatives of key organisations to help to promote filming in London.

By joining the Partnership, signatories agree to support their production team to help them to work within the guidelines, to comply with all statutory regulations and to use methods that conform to best practice.

Productions are urged to read the Code and relevant obligations closely to ensure that they operate within the law.

Please note that although this Code is intended to be as comprehensive as possible, it cannot cover every eventuality. Each production should consult their legal counsel or other advisors in relation to individual concerns.

Any queries regarding the Code should be addressed to ifp@filmlondon.org.uk

Definitions

Production

Production refers to the Producer or Production Company, Production Manager, Location Manager or any other authorised officer or supervising worker of the audio-visual project being made.

Local Authority

Local Authority defines the administrative body of a local council responsible for an area or district of London. There are 33 Local Authorities in London.

Borough Film Service

Borough Film Service is the service provided for filmmakers by each London Local Authority.

Film Contact

Film Contact is the service provided for filmmakers by either a Local Authority or an Organisation or Agency.

Transport for London (TfL)

Transport for London (TfL) is the integrated body responsible for the Capital's transport system.

Health and Safety Executive (HSE)

HSE is the public body responsible for shaping, reviewing and enforcing regulations relating to health and safety in the workplace.

Highways Authority

Highways Authority defines the body responsible for managing and maintaining the highway. This includes Local Authorities' Highways Departments and Transport for London, the traffic and highway authority for the main road Red Route network (Transport for London Road Network) in London.

Traffic Authority

Traffic Authority defines the body responsible for assessing the impact of any proposed activity on traffic flow and the local community. This includes Local Authorities' Highways Departments and Transport for London.

Security Industry Authority (SIA)

SIA is the body responsible for regulating the private security industry. They are responsible for the compulsory licensing of individuals working in specific sectors of the private security industry.

Metropolitan Police Service (MPS) Film Unit

The Metropolitan Police Service (MPS) Film Unit is the single point of contact for liaising with police for filming in London. This does not include the City of London.

General Location Filming Procedures

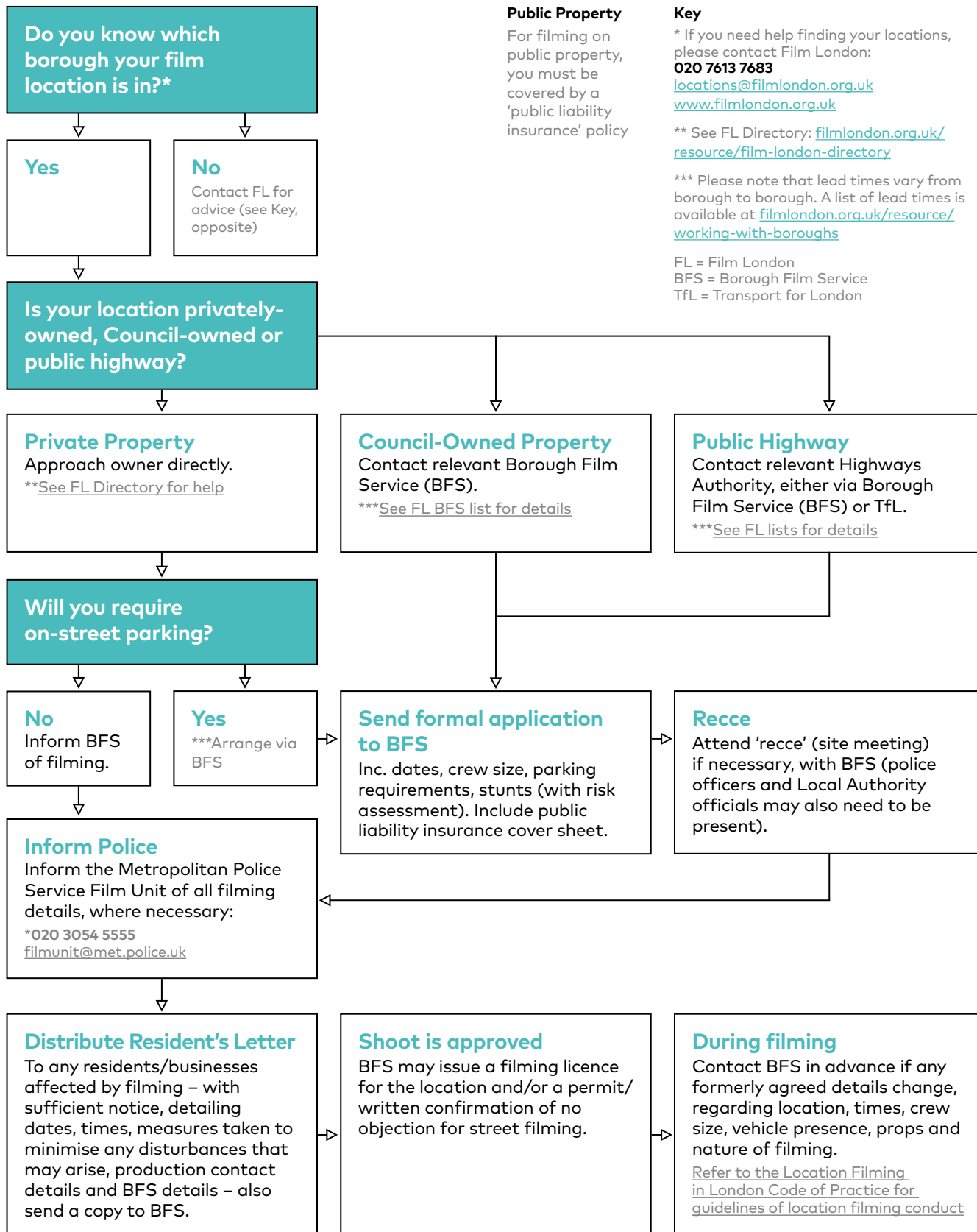
All producers undertake to inform Film London of any complex shoots well in advance of the start of shooting to ensure effective liaison with all parties affected by the shoot. Film London undertakes to facilitate such liaison in a timely and efficient manner.

Productions undertake that they shall inform the relevant Film Contact of a shoot that is taking place in a private location where such shooting may have an impact on the relevant Local Authority or Organisation.

All individuals working on location must take responsibility for their own health and safety, that of their colleagues and anyone outside of the production effected by the filming activity. The producer has the overall responsibility for ensuring that adequate Health and Safety Policy and Management procedures are in place.

Location Filming

The Application Process



Public Property
For filming on public property, you must be covered by a 'public liability insurance' policy

Key
* If you need help finding your locations, please contact Film London: **020 7613 7683**
locations@filmlondon.org.uk
www.filmlondon.org.uk
** See FL Directory: filmlondon.org.uk/resource/film-london-directory
*** Please note that lead times vary from borough to borough. A list of lead times is available at filmlondon.org.uk/resource/working-with-boroughs
FL = Film London
BFS = Borough Film Service
TfL = Transport for London

A-Z of Key Issues

Aa

Animals

The Production shall source animals that are trained to meet the Production requirements and this shall be from a known industry supplier/owner. When filming with animals, the Production shall agree to follow the RSPCA Guidelines for the Use of Animals in the Audio-Visual Industry. The RSPCA Guidelines can be obtained by calling their Performing Animals Hotline on **0300 123 8787**, or visit their website for full information.

Further guidance:

- [RSPCA: Performing Animals](#)
- [HSE: Working with Animals in Entertainment](#)
- [HSE: Managing Health & Safety in Zoos](#)

Statutory obligations:

- [Management of Health and Safety Regulations 1999](#)
- [Management of Health & Safety at Work \(Amendment\) Regulations 2006](#)
- [Animal Welfare Act 2006](#) (Repeals parts of 1911 Act, 1954 Act and 1988 Act)
- [The Protection of Animals Act 1911 to 1988](#)
- [The Performing Animals \(Regulation\) Act 1925](#)
- [The Pet Animals Act 1951](#) and [1983 Amendment](#)
- [The Dangerous Wild Animals Act 1976](#)
- [The Wildlife & Countryside Act 1981](#), [1985 Amendment](#) and [1991 Amendment](#)

Aerial Filming

In addition to obtaining appropriate permissions from the relevant landowner, Productions using manned or unmanned aircraft for filming purposes shall ensure that they are familiar with aircraft legislation and procedures that relate to aerial filming in London.

Due to the nature of the local airspace and the density of habitation within the capital, there are some important restrictions on the operation of aircraft in and around London. Guidance on safety requirements relating to flying unmanned aircraft can be found on the [CAA website](#). Depending on the category of flight, an application may need to be made to the CAA before filming or photography commences and operators must also be registered with the CAA before flying most drones. For more information on permissions and restrictions, visit [Film London Aerial Filming](#).

Aa

Further guidance:

- [CAA: Register to use a drone](#)
- [CAA: Unmanned aircraft and drones](#)
- [CAA: CAP 722 Unmanned Aircraft System Operations in UK Airspace - Guidance](#)
- [NATS Airspace and drones](#)
- [Film London: Aerial Filming](#)

Statutory obligations:

- [The Air Navigation Order 2016](#)
- [Countryside and Rights of Way Act 2000](#)

Asbestos

The Control of Asbestos Regulation 2012 require that companies have undertaken an asbestos survey for their building and productions should ensure that they request a copy of this survey before undertaking filming.

The responsibility for ensuring the premises is safe lies with the person or organisation in control of the premises, however the production also has a responsibility to provide a safe working environment for the duration of the shoot.

If an asbestos survey has not been carried out, the production should liaise with the building's duty-holder to ensure a survey is undertaken, or work with the duty-holder to ensure they are not exposing anyone involved with the filming or affected by the filming.

Further guidance:

- [HSE Asbestos Health and Safety](#)
- [HSE Duty to Manage Asbestos](#)

Statutory obligations:

- [The Control of Asbestos Regulations 2012](#)

Bb

Building Exteriors

Filming or photographing the exterior of a building does not infringe its copyright. Permission is not required to film a building's exterior and building owners are not entitled to charge a fee.

However, there are other intellectual property rights to consider when filming building exteriors such as registered trademarks including a company name or logo.

Further guidance:

- [Film London: Filming Buildings](#)

Bullying and Harassment

The BFI and BAFTA have developed a set of principles for the prevention of bullying and harassment in the screen industries as well as guidance on how to adhere to those principles, see below.

The Production shall agree to these principles and adopt a zero tolerance approach to bullying and harassment.

The Film & TV Support Line (www.filmtvcharity.org.uk) provides confidential and independent advice, 24/7, for all screen industry workers, whatever the issue:

Call: **0800 054 00 00**

Email: info@filmtvcharity.org.uk

Further guidance:

[BFI Principles - Prevention of Bullying and Harassment](#)

[BFI Guidance - Prevention of Bullying and Harassment](#)

Cc

Cabling

The Production shall agree in advance with the Film Contact regarding the appropriate use of cables, the safe laying of agreed cabling and the suitability of attaching cables to street furniture, trees, historic properties and any other relevant items. This process includes all matting, ramping and flying of cables to avoid hazards.

Further guidance:

- [HSE: Preventing Slips and Trips at work](#)
- [HSE: Slips and Trips: hazard spotting checklist](#)
- [HSE: Electrical Safety at Work](#)

Statutory obligations:

- [Health and Safety at Work Act Management Regulations 1999](#)
- [Electricity at Work Regulations 1989](#)

Camera Track (Dollies)

All matters relating to camera tracking shall be discussed and agreed with the Film Contact in advance of filming. Any obstructions or alternative footways planned must be cleared by the Film Contact. Tracking boards may be required in certain circumstances. The Production shall agree to ensure that any action involving tracking is risk assessed.

Catering

Catering arrangements and the positioning of catering vehicles shall be agreed in advance with the Production and Film Contact. The Production shall ensure that no dirty water or food waste be deposited in rainwater gullies and that caterers use a dirty water bowser where possible. Wherever possible the Production shall make use of environmentally friendly materials. Wherever possible, but subject always to the Production's own rules and/or those of its commissioner, which may specify approved caterers, catering is to be sourced from local businesses.

Further guidance:

- [HSE: Waste Management and Recycling](#)
- [HSE: Catering Information Sheets](#)
- [HSE: Catering and Hospitality](#)

Statutory obligations:

- [Management of Health and Safety Regulations 1999](#)

Cc

Charges

All charges that Borough Film Services are entitled to levy are detailed on the Film London website, see below. Some Local Authorities do not charge for filming in the street but most charge an administration fee (either a flat fee or a fee for their time spent assisting filming or both), a fee for the use of council property and a fee for making parking spaces available.

Further guidance:

- [Film London: Borough Charges](#)

Child Performers

Child Performers under school leaving age usually require a Child Performance Licence. The Production must apply for a Performance Licence for the child well in advance. 21 days is required to issue a licence. Child Performance Licences are issued by the Education Welfare Service for the Local Authority in which the child resides, unless the child is at Boarding School.

Where the child is not from the United Kingdom, the child remains subject to the UK requirements when they arrive here. However, care should also be taken to identify and address any additional requirements that arise from the child's usual country of residence or when shooting outside of the UK. The hours that a child is permitted to work will depend upon their age. The Production must check the permitted working hours with the relevant Education Welfare Service.

Further guidance:

- [National Network for Children in Employment & Entertainment \(NNCEE\)](#)
- [Film London: Child Performance Licences](#)

Statutory obligations:

- [Children and Young Persons Act 2008](#)
- [Children Performance and Activities Licensing Legislation 2015](#)
- [Protection of Children Act 1978 and 1999](#)
- [Children \[Performances and Activities\] Regulations 2014](#)
- [Children \[Protection at Work\] Regulations 1998 and 2000](#)
- [Children Act 2004](#)

Council Property

Whenever filming on Council-owned property e.g. in parks, schools, housing estates, town halls etc, the Production shall negotiate a license with the [Borough Film Service](#).

Cc

Cranes, Jibs and Cherry Pickers

The Production shall discuss and agree with the Film Contact, and any other relevant authorities, the specific camera crane or jib arm to be used, and the positioning of such equipment, well in advance of filming. It may be necessary for the relevant authority to carry out a highway inspection both before and after a cherry picker is used.

Camera cranes, jib arms and cherry pickers must be tested and have proof of documentation and shall be operated by certified qualified technicians. Productions shall agree to consult codes and guidance from recognised bodies such as ASPEC's Guidance in the Provision and Safe Operation of Cranes, and shall carry out a risk assessment where using such equipment. Such equipment is likely to require a licence from the relevant Local Authority. Rigging and de-rigging shall be undertaken with respect for local residents and in accordance with the statutory obligations governing noise levels.

Further guidance:

- [HSE: Lifting Operations and Lifting Equipment Regulations](#)
- [HSE book: Lifting Operations and Lifting Equipment Regulations 1998](#)
- [HSE: Working at Height](#)
- [HSE: Mobile Elevating Work Platforms](#)
- [HSE: Preventing Accidents During Lifting Operations](#)
- [HSE: Lifting Procedures](#)
- [HSE: Equipment and Machinery](#)

Statutory obligations:

- [Lifting Operations and Lifting Equipment Regulations 1998](#)
- [The Provision and Use of Work Equipment Regulations 1998](#)
- [The Supply of machinery \[Safety\] Regulations 2008](#)

Ee

Employment

The Production must implement all current UK legislation that informs and guides the employment of all workers. The Production must also observe their legal responsibilities and obligations with regard to the National Minimum Wage and the Working Time Regulations. Producers must obtain sufficient proof of 'Right to Work' for all those individuals directly engaged by the Production prior to commencement of their engagement, and keep copies of the documents in order to comply with UK Immigration legislation. Such 'proof' includes, but is not limited to, a valid passport, national identity card, residence permit and, where required, a certificate of sponsorship (which as of December 2008 replaces the work permit).

If the Production is utilising any foreign nationals in front or behind the camera, it must demonstrate that these people are entitled to enter, remain and work in the UK. Under the UK Borders Agency's Points-Based System of Managed Migration, the Production or its parent company will be required to meet the criteria to register as a Sponsor and issue Certificates that will allow such individuals to work in the UK. In addition, visas to enter the UK may be required. The Production should be aware that there are [immigration rules](#) that must be observed when it is considering issuing Certificates.

Further guidance:

- [GOV.UK: Working, Jobs and Pensions](#) (for minimum wage and working time regulations)
- [GOV.UK: Code of Practice for Performers \(Film and TV\)](#) and [Workers \(Film and TV\)](#)
- [BECTU](#) (for rights at work, pay rates etc)
- [Production Guild](#) (for managed migration, production and accounting personnel etc)
- [ScreenSkills: Work Placement schemes in the Creative Industries](#)
- [British Film Commission: Visas and Sponsorship](#)

Statutory obligations:

- [Immigration Act 2016](#)
- [Immigration, Asylum and Nationality Act 2006](#)
- [National Minimum Wage Act 1998](#) and [2021](#)

Equality

Productions should promote and integrate equality of opportunity into all aspects of its business, including in appointment of staff and crew. They should ensure that they reflect the diversity of the communities under-represented and not discriminate on the basis of race, colour, religion, creed, sex, sexual orientation, gender identity, age or disability.

Further Guidance:

- [Equality and Human Rights Commission Guidance for Employers](#)

Statutory obligations:

- [Equality Act 2010](#)

Ff

Filming from Vehicles

This section refers to, but is not limited to, filming using low loaders, tracking vehicles and a-frames. The Production shall agree to consult with the MPS Film Unit and relevant Highways and Traffic Authority (via the BFS where it is not a Highways Agency or TfL road) when filming from a moving vehicle on a public road. All Road Traffic Legislation must be complied with subject to the grant of any concessions by the Highways and/or Traffic Authority and the Police.

Further guidance:

- [HSE: Safe filming and recording involving vehicles](#)
- [HSE: Guidance on Vehicles at Work](#)
- [MPS Film Unit: Guidance to Filming on the Move](#)

Statutory obligations:

- [Road Traffic Act 1988](#)
- [Road Vehicles \[Construction and Use\] Regulations 1986](#)

Firearms and Weapons

No weapons or firearms of any kind, including prop or replica firearms, shall be used without agreement in advance between the Production and the MPS Film Unit and/or appropriate emergency service and the Film Contact. A Film Weapon CAD number must also be obtained from the MPS Film Unit. This includes when filming exteriors and/or interiors on public and private property. A message will be created by the MPS Film Unit to notify local officers and armed response teams that firearms or weapons are being used whilst filming.

Where it is a live firing weapon the Production must have a licence holder for that weapon present, or a Registered Firearms Dealer (RFD) or a servant of the RFD. Where it is a blank firing weapon, it is recommended to have the above present.

[See also: Special Effects and Pyrotechnics](#) and [Stunts](#)

Further guidance:

- [MPS Film Unit: Guidance for scenes involving a weapon of any kind](#)
- [HSE: Management of Firearms and Weapons in Film and TV Production](#)

Statutory obligations:

- [Firearms Act 1968](#)
- [Criminal Justice Act 2003](#)
- [Public Order Act 1986](#)
- [Violent Crime Reduction Act 2006](#)

Hh

Health and Safety

The Production is bound by law to take reasonable care and measures to ensure that a healthy and safe working environment is created and maintained for all. All relevant Health and Safety legislation must be abided by. Failure to follow appropriate Health and Safety procedures may invalidate any insurance and in the event of an incident could result in enforcement - including prosecution.

Further Guidance:

- [HSE: Film, TV and Broadcasting](#)
- [HSE: Workplace Health, Safety and Welfare](#)

Statutory obligations:

- [Health and Safety at Work Act 1974](#)
- [Management of Health and Safety at Work Regulations 1999](#)
- [Management of Health and Safety at Work \(Amendment\) Regulations 2006](#)
- [Fire Precautions \[Workplace\] Regulations 1999](#)
- [The Corporate Manslaughter and Corporate Homicide Act 2007](#)

High Visibility Clothing and Personal Protection Equipment

The Production must ensure that the appropriate level of safety clothing is worn for the safety of the crew when filming on the public highway and in the public domain.

Further Guidance

- [HSE: Personal Protective Equipment \(PPE\) at Work](#)
- [HSE: Health and Safety in Audio Visual Production – Your Legal Duties](#)

Statutory obligations

- [Personal Protective Equipment Regulations 2002](#)

Highways and Traffic Management

The Production shall liaise with the relevant Film Contact when wanting to use public highways and footpaths for filming or for placing down equipment. The London Local Authorities and Transport for London Act 2008 allows road closures for filming to be carried out by Order or by Notice by the relevant Traffic Authority/ies. There are conditions and lead in times to be considered for closures. The Productions will likely need to contact the Borough Film Service well in advance of the desired shoot date. There is a low emissions zone and ultra low emissions zone in operation in London, and vehicles in central London must pay the congestion charge. Please see the TfL website below for further details.

Hh

Further Guidance:

- [HSE: Work Related Road Safety](#)
- [MPS Film Unit: Filming on the Move](#)
- [TfL: Filming and Photography on the Roads](#)
- [TfL: Low Emission Zone](#)
- [TfL: Ultra Low Emissions Zone](#)
- [TfL: Congestion Charge](#)

Statutory obligations:

- [Management of Health and Safety Regulations 1999](#)
- [Road Traffic Regulation Act 1984](#)
- [Highways Act 1980](#) and [1986](#)
- [Road Traffic Act 1988](#)
- [Traffic Management Act 2004](#)
- [Roads Vehicles Lighting Regulations 1989](#) and [2005](#)
- [Roads Vehicles \[Construction & Use\] Regulations 1986](#)
- [London Local Authorities and Transport for London Act 2008](#)

Historic and Cultural Locations

The Production shall adhere to any conservation regulations laid down by the respective Film Contact.

li

Indemnity and Insurance

The Production shall obtain and produce to the Borough Film Service or Film Contact a copy of the relevant insurance needed before shooting commences. The need for insurance is governed by statutory obligation.

[See also: Public Liability Insurance](#)

Further guidance:

- [HSE: Employers' Liability Act](#)

Statutory obligations:

- [Employers' Liability Act 1969](#)
- [Employers' Liability Regulations 1998](#)
- [Employers' Liability \[Compulsory Insurance\]\(Amendment\) Regulations 2004](#)



Lighting

The Production shall agree the positioning and safety of lighting in advance with the Film Contact and/or designated authority. An appropriate degree of flexibility may be agreed providing it is within the parameters of Health and Safety legislation.

Further guidance:

- [BSI: Temporary electrical systems for entertainment and related purposes](#)
- [HSE: Electrical Safety](#)
- [HSE: Electrical Safety for Places of Entertainment](#)
- [HSE: Electrical Safety for Entertainers](#)

Statutory obligations:

- [Electricity at Work Regulations 1989](#)

Litter Removal

The Production shall ensure that all litter is removed immediately at the end of the filming and that the location and environs are returned to the same condition in which they were found. The Production may ask the relevant Borough Film Service to remove litter; this service is to be provided according to local contract rates. Waste created on location should be recycled wherever possible.

Further guidance:

- [DEFRA: Code of Practice on Litter and Refuse](#)

Statutory obligations:

- [Environmental Protection Act 1990](#)

Nn

Night Filming

The Production shall consider and consult with the Film Contact, local residents and businesses in the planning process.

Further Guidance:

- [DEFRA: Noise Nuisances](#)
- [DEFRA: Artificial light nuisances](#)
- [HSE: Noise at Work](#)

Statutory obligations:

- [Management of Health and Safety Regulations 1999](#)
- [Environmental Act 1990](#)

Noise

Use of audio playback and megaphones shall only be permitted following agreement between the Production and the Film Contact. The parking position of generators shall be agreed in advance between the Film Contact and the Production and will depend on local sensitivities.

[*See also: Night Filming*](#)

Statutory obligations:

- [Control of Noise at Work Regulations 2005](#)
- [Environmental Act 1990](#)

Pp

Parking

The Production shall submit detailed parking plans to be discussed and agreed with the Film Contact; in particular for on-street parking for technical vehicles, equipment and bays to be reserved for continuity. The Production shall make every effort to find off street parking for all facilities vehicles. The Production shall not obscure mandatory or warning traffic signs when parking vehicles on highways that are not closed. Regarding coning for parking, the Production acknowledges that cones have no legal force to secure parking and their use shall be agreed in advance with the Film Contact.

Further Guidance:

- [HSE: Vehicles at Work](#)
- [Film London: Borough Parking Fees](#)

Statutory obligations:

- [Management of Health and Safety Regulations 1999](#)
- [Road Traffic Regulation Act 1984](#)

Police and Emergency Services

The Production shall inform the Metropolitan Police Service (MPS) Film Unit and/or appropriate emergency service of all proposed filming on the street and/or in a public space, as agreed with the Film Contact. The staging of crimes and accidents, plus use of firearms (including prop and replica firearms) and special effects shall be agreed, in advance of the shoot, with the MPS Film Unit and the Film Contact. The Production shall inform the MPS Film Unit and/or appropriate emergency service when filming involves celebrities who may cause security or crowd control issues. The MPS Film Unit will endeavour to provide all reasonable assistance to all filmmakers.

There may be a legislative impact of scenes involving the following:

- Fake police officers or vehicles
- Re-creating crimes
- Presence of weapons both prop and imitation and, in the case of firearms, deactivated or replica firearms
- Explosions or perceived explosives
- Special effects
- Scenes involving nudity
- Filming on the move e.g. low loaders, A-frames and tracking

All enquiries regarding the above will be managed by the MPS Film Unit, with the exception of the City of London where enquiries will be dealt with by the City Police.

[See also: Filming from Vehicles](#) and [Firearms and Weapons](#)

Further guidance:

- [MPS Film Unit: Filming in London](#)

Pp

Problem Solving

In the event of a dispute arising between the Production and other parties on location, please contact Film London on **020 7613 7683** or locations@filmlondon.org.uk.

Publicity

The Production (or in some cases, the Distributor or Broadcaster) shall provide the location/ Borough Film Service with publicity material on release of the project wherever possible.

Public Liability Insurance

The Production shall provide a copy of Public Liability Insurance to the Borough Film Service or filming location for all location filming, and agree to indemnify the location owner or representative against any claims arising as a direct result of the activities of the Production.

[See also: Indemnity and Insurance](#)

Public Transport

The Production must seek permission from the relevant Film Contact before filming on public transport. Drinking alcohol or being perceived to be drinking alcohol is banned on the Tube, London Buses, Docklands Light Railway, tram services and at Transport for London stations throughout the city.

Statutory obligations:

- [Transport for London Conditions of Carriage 2008](#)

Rr

Residents and Businesses

The Production should be considerate to the impact that filming in the local area will have and shall consult with local residents and businesses that may be affected by their filming prior to, during and after the shoot.

The Borough Film Service should be approached before residents and businesses are contacted as they can provide the Production with relevant local information to aid a fair consultation process.

Risk Assessment

Risk Assessments are required by both the self-employed and any organisation with employees, so that they can meet their statutory duties to employees and those affected by their actions, as well as satisfying their insurance obligations. Specific Risk Assessments, beyond those generic assessments generally applying to film production on location, are also required depending on the type and nature of filming, and also as to the place/s where filming is to take place.

While the Film Contact may demand the provision of copies of the Production's relevant Risk Assessments, the responsibility of the completion and content of this document lies solely with the Production, specifically the Producer. The Producer retains a non-delegable duty to ensure that the film production is performed safely, though the Producer can decide to delegate some element of responsibility to a 'competent other'. All such health and safety duties, and therefore any liability arising, ultimately lie with the Producer – to that extent those duties are non-delegable. It must be underlined that merely because risk assessments have been provided as requested by the provisions of the Film Contract, that does not mean that the Film Contact has 'approved' or 'signed off' the document.

Further Guidance:

- [HSE: Risk Management](#)
- [HSE: Controlling Risks in the Workplace](#)
- [HSE: Health and Safety in the Entertainment and Leisure Industry](#)

Statutory obligations:

- [Health and Safety at Work Act 1974](#)
- [Management of Health and Safety Regulations 1999](#)

Rr

Rivers and Waterways

When planning to film on any waterway, the Production must liaise with the Film Contact from the relevant governing body as early as possible. Specific health and safety measures will apply.

Road Markings

The temporary painting-out or disguising of road markings, lines or other road signs is subject to agreement in advance with the Film Contact and, if necessary, the Highways Authority. The Production shall also notify local Police in advance of any such undertaking. The Production agrees to fully reinstate any alterations to road markings to the satisfaction of the Traffic or Highways Authority and when obliged to use official contractors shall pay cost price.

Ss

Scaffolding and Lighting Towers

All requests to erect scaffolding or lighting towers in a public area, highway or footway shall be agreed in advance with the Film Contact and/or designated authority. A temporary structure licence may be required.

Further guidance:

- [HSE: Equipment and Machinery](#)
- [HSE: Scaffold Checklist](#)
- [HSE: Working at Height](#)
- [HSE: Work at Height: A Brief Guide](#)

Statutory obligations:

- [Management of Health and Safety at Work Regulations 1992](#) and [1999](#)
- [The Workplace \[Health, Safety and Welfare\] Regulations 1992](#)
- [Construction \[Design and Management\] Regulations 1994](#) and [2015](#)

Ss

Security

The Production must use Security Industry Authority (SIA) licensed security for all licensable activity at all times and follow guidelines that conform to the Private Security Industry Act. SIA Security badges will have individual numbers on which can be checked on the SIA website. Licensed activity includes but is not limited to manned guarding (guarding premises against unauthorised access, destruction or damage, and theft), close protection (guarding an individual) and guarding cash or valuables in transit. A Door Supervisor license is required if manned guarding activities are undertaken in relation to licensed premises that are open to the public (i.e. a public house, restaurant or bar).

- Are they SIA licenced?
- Do they have public and employers liability insurance of up to £10m?
- What list of services do they provide? (ie: Location Security, Studio Security, Location Support, Lock offs, Crowd Control, Event Security, Street Reservations, Dog Patrols and Close Protection)
- Can they provide a risk assessment?

The Production must respect security issues local to the borough or location in which the filming is taking place and shall take advice of the MPS Film Unit, the security provider and the Film Contact when deciding upon the number of security personnel required and their positioning. The Production may be asked to work alongside on-site security officers. Such on-site security are not employees of the Production, so in this instance it is advisable to check insurance policies.

Further guidance:

- [SIA website](#)

Statutory obligations:

- [The Private Security Industry Act 2001](#)

Signage

Unless approved by the relevant Traffic or Highways Authority, unit direction signage on the highway is illegal. The Production shall consult the Film Contact before attaching all other non-public highways signage.

Further Guidance:

- [GOV.UK: Traffic signs, signals and road markings](#)

Statutory obligations:

- [Highways act 1980 Section 132\(1\)](#)
- [Criminal Justice Act 1982](#) (ss 35, 37, 38, 46)

Ss

Special Effects and Pyrotechnics

This section refers to, but is not limited to, all sequences including physical, atmospheric and pyrotechnic effects. In accordance with statutory Health and Safety obligations, the Production must provide a risk assessment and method statement. The Production shall notify the relevant Film Contact or relevant third party whenever physical, or pyrotechnic effects are to be used, and shall consult the MPS Film Unit and Emergency Services in advance.

The Production shall inform local residents and businesses of such filming, in consultation with the Film Contact. All special effects shall be under the direct supervision of a JIGS graded SFX Supervisor, or person of similar experience. Atmospheric effects (e.g. wet downs, snow, mist and rain) may only be carried out with the approval of the Film Contact after a proper evaluation of the forecast weather conditions and with the proper signage and a clear up and safe disposal schedule. Productions shall consider existing industry codes and guidance documents from recognised bodies such as HSE, BECTU Special FX branch, etc.

Further Guidance:

- [HSE: Preventing Slips and Trips at work](#)
- [HSE: Hazard spotting checklist](#)
- [HSE: Smoke and Vapour Effects](#)
- [HSE: Explosives and Pyrotechnics](#)
- [HSE: Filming Involving Vehicles](#)
- [HSE: Special or Visual Effects](#)
- [HSE: Dangerous Substances and Explosive Atmospheres Regulations](#)
- [HSE: Stunts, Fights and Hazardous Production Activities](#)
- [Joint Industry Special Effects Committee \(JISFX\) Grading Scheme and Code of Practice](#)

Statutory obligations:

- [Management of Health and Safety Regulations 1999](#)
- [Explosives Act 1875](#)
- [Road Traffic Acts 1988 and 1991](#)
- [Provision and Use of Work Equipment 1998](#)
- [Fire precautions \[Workplace\] Regulations 1999](#)
- [Dangerous Substances and Explosive Atmospheres Regulations 2002](#)
- [Storage of dangerous substances 2003](#)
- [Control of Substances Hazardous to Health Regulations 2002, 2003 and 2004](#)
- [Control of Explosives Regulations 1991](#)
- [The Corporate Manslaughter and Corporate Homicide Act 2007](#)

Ss

Street Signs, Lighting and Furniture

The removal of street furniture, including street signs, and the adjustment of street lighting shall be subject to agreement in advance between the Film Contact and, if necessary, the Traffic or Highways Authority. All agreed work shall normally be carried out by the Traffic or Highways Authority and charged to the Production at cost. The Production shall agree to cover these costs and those of re-installment.

[See also: Signage](#)

Statutory obligations:

- [Traffic Signs Regulations and General Directions 2002](#)
- [Highways Act 1980](#)

Stunts

In accordance with statutory Health and Safety obligations, the Production must provide a risk assessment. The Production shall notify the relevant Film Contact or relevant third party whenever stunts are to be prepared or filmed on location and shall consult the Police and Emergency Services in advance. A full method statement and risk assessment is required by the Film Contact. The Production shall inform local residents and businesses of such filming, in consultation with the Film Contact. The production shall ensure their insurance is adequate and fully covers all activities of the stunt department - proof may be requested.

All stunts shall be under the direct supervision of a recognised British Stunt Register (BSR) Action Coordinator or a person of similar experience. Visit filmlondon.org.uk/filming-in-london/plan-your-shoot/make-sure-its-legal for more information.

Further guidance:

- [HSE: Stunts, Fights and Hazardous Production Activities](#)
- [HSE: Preventing Slips and Trips at work](#)
- [HSE: Stunts & Fight Scenes](#)
- [HSE: Filming Involving Vehicles](#)
- [Confirm British Stunt Register Membership Status](#)
- [Understand the Stunt Grade Scheme](#)
- [BSR Website](#)

Statutory obligations:

- [Management of Health and Safety Regulations 1999](#)
- [Explosives Act 1875](#)
- [Road Traffic Acts 1988](#) and [1991](#)

Ss

Sustainability

Productions are encouraged to adopt green filming practices to reduce their environmental impact while filming in London. This is in line with the Mayor's London Environment Strategy, which aims to reduce air pollution, waste, noise and greenhouse gases. Film London operates an environmental certification scheme in partnership with Greenshoot, Green Screen, which helps productions to adopt sustainable working practices. It is important that productions comply with London Boroughs' environmental legislation such as the implementation of a no idling policy for vehicles. Green Screen recommends a wide range of sustainable measures across all departments.

Further guidance:

- [Green Screen](#)



020 7613 7683
locations@filmlondon.org.uk
ifp@filmlondon.org.uk
filmlondon.org.uk
[@Film_London](#)